

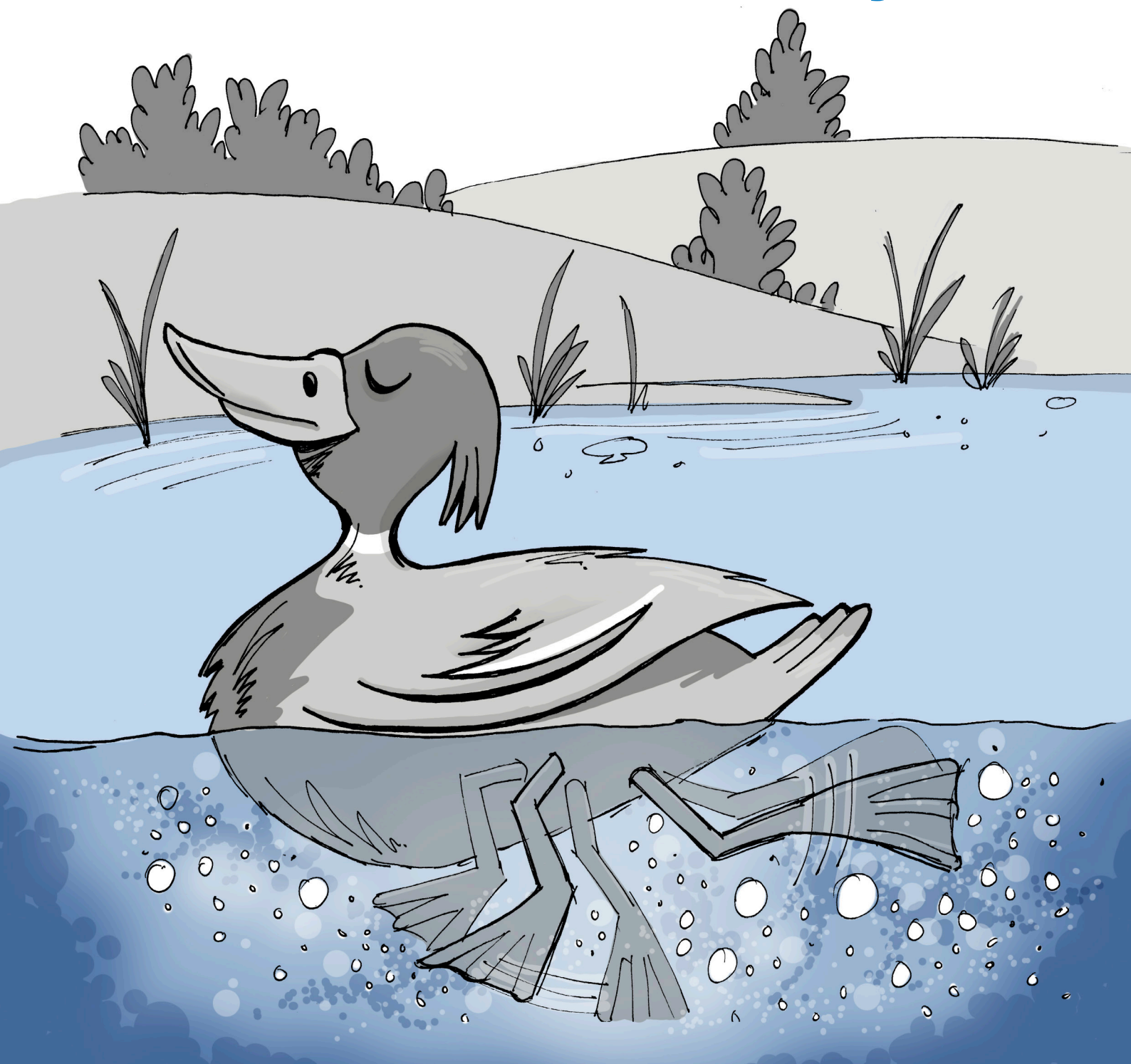
Volume 49 //

# Acuity

The greatest wealth is **your peace of mind...**



## It takes a lot of work to make this look easy



**It takes a lot of work to make this look easy**

# “ Be a duck. Remain calm on the surface and paddle like hell underneath. ”

Michael Caine, actor

**Systematic, evidence-based investing often results in very little activity in a portfolio – but it would be wrong to think that this is the result of a ‘set-and-forget’ strategy.**

**Considerable effort goes on behind the scenes to allow this state of calm consistency to exist. The fortitude and discipline to deliver the advice that, ‘not much needs to be done to your portfolio except for rebalancing’, comes from a rigorous process of ongoing challenge to the status quo.**

**This volume of Acuity provides an insight into the furious paddling that goes on below the surface, belying the calmness that you see above the water.**

## **You don’t have to look busy to provide good advice**

In most walks of life, when you employ a professional or craftsman, you expect a little bit of action for your money. Now is generally better than later, and more is generally better than less.

However, this generality does not apply in some areas. Take the case of a GP, for example, where a patient comes into the surgery with a very sore throat and flu-like symptoms. Today, many GPs feel under increasing pressure from patients to come up with some ‘scientific’ solution to their ailments – such as the prescription of antibiotics – and some patients almost feel cheated when the advice they receive is simply to swallow a couple of paracetamol tablets and to take it easy for a day or two.

Do we doubt the training, experience and wisdom of the GP because of the advice we receive? Hopefully not. After all, science tells us that antibiotics don’t work on viruses, only bacteria. The same pressures apply to advisers like us when it comes to investing. Adopting an evidence-driven, systematic approach to investing can feel as if a portfolio, once set up, is just left to roll on in a ‘set-and-forget’ manner.

Every time you open the valuation statement outlining your portfolio, it is likely to look largely unchanged, both in terms of its structure and the products through which the investment strategy is implemented in practice. One of these products is likely to catch your eye, as it has not done as well as the others, or the portfolio as a whole is down. It might be tempting to ask, “What are you going to do about it?”. The answer is probably going to be “Nothing!”

But by focusing on the work of our Investment Committee, we can soon see that 'nothing' is usually – but not always - the right answer.

If you are already one of our clients, you will by now be familiar with us telling you to stay calm at times of market jitters, that we will rebalance your portfolio on a regular basis, that returns come from the markets, that costs really matter, that a sensible long-term, diversified portfolio structure is key, and to avoid looking at your portfolio too often.



Figure 1: Systematic investing - the view from a client's perspective

The most crucial thing to remember is that we advise all of these things, not because they are easy for us - they are not, as we will explore below – but because that is what the evidence suggests gives you the greatest chance of experiencing a good investment outcome.

## Challenging the status quo

The seeming lack of investment activity on a portfolio from one period to the next belies the considerable time, effort, discipline and fortitude that goes into achieving this for our clients. Our Investment Committee sits at the heart of this effort and one central question drives its efforts: does the investment approach adopted still represent best practice, based on the latest evidence and theory available to us?

That is a big question, which takes quite a lot of answering and has many layers to it.

One risk to any thesis is that of confirmation bias, when one selects evidence that fits – rather than challenges – the thesis. An important point to note is that our overriding goal is to do what is in a client's best interests, not to defend systematic, evidence-based investing as the only way to invest money, now and forevermore. The Investment Committee is always open to challenge of the status quo. That said, the evidence is highly compelling and any changes down the line are likely to be evolutionary, rather than revolutionary.

Behind the scenes, the Investment Committee is paddling away furiously to make sure that client portfolios remain robustly structured, the long-term strategy is executed using best-in-class products, and the ongoing oversight is both regular and robust. Risks and opportunities on the horizon are keenly observed.



Figure 2: Systematic investing – the view from the Investment Committee's perspective

The broad terms of reference of the Investment Committee are set out below:

#### **Manage risks over time**

- The Investment Committee is responsible for the oversight of the risk in portfolios and the wider investment process. Meetings are regular and minutes are taken, which include all action points to be followed up on. Third-party inputs and guest members provide independent insight and challenge.

#### **Challenge the process**

- Our investment process is driven by the latest empirical evidence and theory available. It is always open to challenge. If new evidence suggests that doing things differently would be in our clients' best interests, then we will revise our approach. The investment process is evolutionary, but change is most likely to be slow and incremental.

#### **Review the portfolio structure**

- The underlying characteristics of our client portfolios are reviewed, including performance and risk level attributes. Risks (asset class exposures) and their allocations within a portfolio are evaluated. Any issues are raised and resolved. Existing asset classes are reviewed alongside asset classes and risk factors that currently sit outside the portfolios. Areas of interest are placed on a longer-term 'watch' list.

#### **Review the incumbent 'best-in-class' investment products**

- The incumbent products are 'best-in-class' choices seeking to deliver the returns due to investors for taking specific market risks. Each product has a role to play in a portfolio and its ability to deliver against this objective is regularly reviewed. Any product-related issues are raised and resolved.

#### **Screen for new products and undertake appropriate due diligence**

- Although the incumbent products were recommended as 'best-in-class', new products are regularly being launched. Tough screening criteria are in place against which new funds are judged. New, potential 'best-in-class' products face detailed due diligence and approval. They are included only when they make the grade. Given the quality of the products already in portfolios, the threshold for replacement is high, but not insurmountable for newer products.

### Reaffirm or revise the investment process

- The Investment Committee is accountable for reaffirming or revising the structure of client portfolios. Risk (asset) allocations and product changes are approved by the Investment Committee. Any actions arising from portfolio revisions will be undertaken, after discussion with and agreement by clients.

## What might the future hold?

As part of the ongoing process of challenge, there are a number of topics around which much thinking, discussion and, ultimately, decisions are required. Here are several:

- China has recently allowed its 'A' shares – i.e domestic shares listed on stock markets in China – to be accessed more widely, and they are increasingly being included by index providers in their indices, albeit from a low base. Currently China represents around 30% of the emerging market allocation (that is only 3% or so of global market capitalisation in total), but this could grow materially in the coming years as its capital markets grow, as more companies are listed and more of each company's equity is freely traded. At what point does the allocation in a) the emerging market and b) the world index need review and possible action, as China is, after all, still a totalitarian state?
- We adopt a risk-factor framework for constructing portfolios – i.e. we make allocations predominantly to market, value and size risk factors on the equity side; and duration and credit on the bond side. Interesting risk factors such as momentum, betting-against-beta and strategies such as trend following are currently prominent in the academic literature. What threshold would a factor need to exceed before it should be considered for inclusion in a portfolio? What would an integrated strategy look like to include an additional factor in a portfolio, given the interrelationship with existing factors already used? What does a 'best-in-class' product look like in this space?
- The US represents around 60% of developed market capitalisation, and it produces around 25% of global GDP despite representing only 7% of the world's population. Does a point get reached, if the US were to continue to outperform other markets, where the concentration in one market, despite its global companies, continues to make sense?

One can perhaps see that whilst none of these issues are immediately pressing, and should certainly not be rushed into in a vainglorious attempt to be ahead of the curve, it is perhaps easy to see that the Investment Committee has some interesting and taxing decisions ahead of it in the coming years. Decisions that may or may not slowly weave their way into your portfolio.

## Independent, third-party support in the process

We have engaged the services of Albion Strategic Consulting as a guest member to provide third-party, independent input into the Investment Committee. It provides ongoing research on investment matters, reviewing the latest evidence supporting or challenging our approach, and its findings are reviewed in the meetings. The company produces its research reviews twice a year, and provides a 'Portfolio Analysis' dashboard, giving considerable insight into the behaviour of both the products used in constructing portfolios and the aggregated portfolios themselves. Albion's Risk Matrix monitors the regulatory, investment process and market risks we face. These inputs provide useful analysis for the Investment Committee to review, discuss and raise any pertinent issues.

## **It's sometimes hard to do nothing, but it's usually the right thing to do.**

Investment theory, academic research and empirical evidence, robust primary thinking and a good dose of common sense provide the foundations for the fortitude and discipline required to run a long-term, strategic and systematic approach to investing. Without this deep certainty and quiet confidence, the noise, excitement and sometimes pain faced by investors can result in too much action, much of it inevitably of the knee-jerk, emotional variety.

It takes fortitude and discipline to stay calm at times of market crisis, to remain invested and to rebalance the portfolio, if necessary. It takes fortitude and discipline not to chase 'hot' parts of the markets (bitcoin, gold, tech stocks, China etc.) or 'hot' managers (e.g. Fundsmith), or to restructure the portfolio to take advantage of or avoid short-term opportunities and challenges (Brexit, China trade wars, low yields on high quality bonds) or giving up on certain parts of the diversified portfolio that happen to be suffering at present (value stocks and emerging markets).

It takes fortitude and discipline to keep meeting with clients and to tell them again that, despite the fees they pay (remembering though that most of the fee relates to the financial planning work and advice they receive rather than investment management), their portfolio does not need changing.

The next time you open your latest valuation report, remember that despite the lack of activity on the surface, the Investment Committee continues to paddle furiously behind the scenes to allow this to be the case.

In the immortal words of the investment legend and author Charles Ellis:

**| *'In investing, activity is almost always in surplus.'***

Perhaps we should amend this slightly to:

**| *'In investing, activity is – except for the Investment Committee – almost always in surplus.'***

## Other notes and risk warnings

### **Use of Morningstar Direct data**

Morningstar Direct © 2019. All rights reserved. Use of this content requires expert knowledge. It is to be used by specialist institutions only. The information contained herein: (1) is proprietary to Morningstar and/or its content providers; (2) may not be copied, adapted or distributed; and (3) is not warranted to be accurate, complete or timely. Neither Morningstar nor its content providers are responsible for any damages or losses arising from any use of this information, except where such damages or losses cannot be limited or excluded by law in your jurisdiction. Past financial performance is no guarantee of future results.'

### **Risk warnings**

This volume of Acuity is distributed for educational purposes only and must not be considered to be investment advice or an offer of any security for sale. The reference to any products is made only to make educational points and must, in no circumstances, be deemed to be any form of product recommendation.

This article contains the opinions of the author but not necessarily the Firm and does not represent a recommendation of any particular security, strategy or investment product. Information contained herein has been obtained from sources believed to be reliable but is not guaranteed.

**Past performance is not indicative of future results and no representation is made that the stated results will be replicated.**

Errors and omissions excepted.

sensibleinvesting.tv is owned and operated by Barnett Ravenscroft Wealth Management, a trading name of Barnett Ravenscroft Financial Services Ltd, which is authorised and regulated in the United Kingdom by the Financial Conduct Authority FRN: 225634 and registered in England and Wales under Company No. 04013532.

The registered office address of the Firm is 13 Portland Road, Edgbaston, Birmingham, B16 9HN

Acuity

